

THE BELL
The Newsletter of the
Drew United Methodist Church
November 2011



Drew United Methodist Church
P.O. Box 900
28 Gleneida Avenue
Carmel, NY 10512

The Rev. Karen A. Burger, Pastor

Office Hours: 9:30 a.m. – 2:30 p.m.
Tuesday, Wednesday, Thursday, Friday
845-225-2019 (telephone)
845-225-2904 (fax)

E-Mail: DREWUMC@VERIZON.NET
Web Site: www.drewumc.org

9:30 a.m. Worship & Sunday School
Saturday, 7:00 p.m. Worship

From The Pastor's Desk

Dear Brothers and Sisters in Christ:

November is a month for giving thanks. We give thanks for God, Who is ever faithful! We give thanks that we have a church family to worship and serve God with. We give thanks that we have some beautiful programs and concerts coming up. There are popular music concerts in November and December featuring church members Thomas Sherry, Robbie Rigo, as well as our pastor and community singers and bands. Then on Sunday, December 11, we will be treated to a concert by the new Community Festival Choir under the direction of Don Wiggins in Drew's lovely sanctuary. Please plan to attend and tell your friends! In November we will have the opportunity to put together Thanksgiving baskets and to hear Brother Melvin Hall preach at the Saturday Service on Saturday, November 19th. Don't miss out! Join us!

Thank you for all of your help at our Drew Town Meeting in October too. Your participation and input for our Administrative Council was a blessing, and we hope it helped you to feel a part of what we do here as a church. So many lives are touched by Drew United Methodist Church; I hope you realize that and want to be a part of the ongoing support of our church through your prayers, presence, gifts and service! Special thanks to the Drew Thrift Shop for a great season just past; for the many ways the volunteers reach out and help our church and the community.

In Christ's Service,

Rev. Karen

The Rev. Karen A. Burger, Pastor



SUNDAY SERVICES IN NOVEMBER

Sunday, November 6 th	"Stories of Saints"	Twenty-First Sunday after Pentecost; All Saints Sunday; Communion; Baptism of Jianna Mero
Sunday, November 13 th	"Our Social Principles: Part Four"	Twenty-Second Sunday after Pentecost
Sunday, November 20 th	"Gratitude and Health" Brother Melvin Hall visiting.	Christ the King; Thanksgiving Sunday
Sunday, November 27 th	"Faithful Expectation" Lighting of first Advent Wreath Candle	First Sunday of Advent; Celebration Sunday

Healing Prayer News

The Healing Prayer Team will be in the sanctuary following each monthly Communion Sunday worship, to pray for any who would like healing prayer at the altar.

Pop/Rock Music at Drew!!!

We are excited to have so much musical talent within our community, and to make it available to everyone. We are featuring two concerts this month:

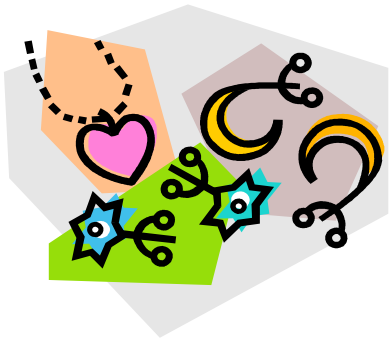
- 1) Robbie Rigo, a member of Drew, will be performing songs from his CD "Different Sides," as well as classic rock tunes and even something from Phantom of the Opera on Friday, November 4th at 8:00 p.m. Guest performers include Rev. Karen, Tom Sherry and Chris Curry. Tickets are \$5 per person; sponsored by our Sunday School and Missions Committees. Robbie's CD will be on sale- a portion of proceeds will be donated to Drew.
- 2) Our House of Rock happens again on Saturday, November 12th- doors open at 7:00 p.m. and the show starts at 8:00 p.m. Headlining the show is the group Night Riders, with special guests Austin Jahner, Kid Jerusalem, and Live Live Die. Art by Turizzo Anaya will be on display as well. Tickets are \$8 in advance (\$10 at the door) and can be purchased through the church office. Refreshments available.

We hope to see you at these exciting shows!



An Invitation

To be part of



Jewelry Wanted for our Holiday Bazaar!

As you know, the Bazaar is around the corner, and once again, we will have a jewelry table, hosted this year by Pat Recchia. Our table is bare and therefore, your help is needed. Jewelry, perfume, and other such items of interest- from “gems to junk” – all is welcomed! Please bring your donations to the church office during office hours or following Sunday worship (be sure to mark your package “jewelry table – bazaar”). Thank you!

From the Music Department

I remind you that this year, the new “Community Festival Choir” will be presenting a Christmas Concert on December 11th at 4:00. This is an outgrowth of the choirs that have presented concerts the past two years on Good Friday.



All are invited to join the choir for this concert. The rehearsals are on Sunday afternoons preceding the concert from 2:00 – 4:00 p.m., and began on October 30th. If you would like to join, or want more information, please contact me at dgwiggins@gmail.com or 914-953-2546.

Another musical opportunity in the Advent season, and I will remind you of this in next month’s Bell, is a Carol Sing on December 18th at 3:00. Put it on your calendars, and come sing all the carols that we run out of time to sing in our services. There is perhaps more great music written for this season than all of the rest of the Church Year combined. And a large part of that literature is beloved carols.

I am excited about the coming musical events at Drew. Come and join us and share the joy.

Don



SpiritWalkers (Ecumenical Hiking Group)

God spoke, "Let us make human beings in our image, make them reflecting our nature

So they can be responsible for the fish in the sea,

the birds in the air, the cattle, and, yes, Earth itself,

And every animal that moves on the face of the earth." Genesis 1:26-28



Last month, three intrepid hikers did a short hike over near Storm King Mountain in Cornwall on Hudson. High winds did not distract from a beautiful view! Several of us regrouped the following day to participate in the Putnam CROP Walk, covering 6 miles on the rail trail in Carmel/Mahopac. We had beautiful weather and spirits were high.

Watch the church bulletin for details on our November hike- we hope to go on a moonlight walk!

If you would like to be on our e-list for the year's schedule and any updates, please send a message to drewumc@verizon.net, subject line "Spirit Walkers." Or, look for the Spirit Walkers Ecumenical Hiking Group page on Facebook. All hikers must have a signed waiver on file with the church prior to hiking with us, and, if age 18 or under, a signed permission slip.

We look forward to seeing you as we explore the beauty of God's creation!



Thrift Shop News

Thank you!

On Saturday, November 5th, we'll celebrate the great work of all the Thrift Shop

volunteers over the past year with our annual luncheon, which will be held at Cugini's Restaurant in Brewster.

Because of their work, we have contributed \$20,000 to the church, once again fulfilling our pledge, and we will be looking to help the church further with its financial needs. In addition, the Thrift Shop provided vouchers for local agencies serving families in need; these Putnam residents were then able to obtain clothing and household goods at no cost. The Thrift Shop Board also committed itself to the maintenance of the shop, accomplishing work on the grounds

and doing interior painting. We owe a special thanks to Roger Hazelton for his landscape work at the shop. In addition, we had a crew of volunteers cleaning out the shop after it closed and doing the painting during the last week of October.

Now preparations for the fun of the holiday season can begin. This year, as in the past two years, we will open the shop to customers during the Christmas Bazaar. And this year, as in the past, the shop will be decorated and stocked with beautiful Christmas and winter clothing and decorative items, thanks to a small group of shop volunteers who make this project a labor of love.

Our thanks go out to everyone who supported the work of the Thrift Shop this year, including all those who brought in donations and stopped in to do some shopping with us. It has been a great year – and it's not over yet. Hope to meet you in the shop in December!

Thrift Shop Board for 2011

Gayle Aprile	621-0426	Kathy Fleming	225-5943	Pat Recchia	225-4238
Ellie Arnholm (Ad Council Rep.)	531-1383	Bill Listwan	225-2122	Kathleen Reynolds	225-1393
Lori Duke	878-1064	Heather Listwan	225-2122	Dee Seftner	225-9630
Tracie Duncan (Treasurer)	225-1393	Brett Mitton	855-4761	Barbara Thibodeau	225-8218



The Board of Trustees is looking at completing all fall clean up around entire property. There is a November clean up date of the 19th from 8:30 to 11:30. This will be the last leaf and property cleanup before the holidays and December church activities. Please come and lend a hand to make the church grounds beautiful. The Board of Trustees is looking for anyone with experience in polishing floors. Our gym floors need polishing and we wish to find someone within the congregation who may be able to assist in this task. Please let a trustee know if you are interested. The trustees have postponed the side entrance project until spring of 2012. The ramps project is still going to be completed this fall as an Eagle Scout project.

VOLUNTEERS WANTED!!

The Board of Trustees is considering establishing a sub-committee of volunteers comprised of church members to perform various general repairs/projects. There will be no meetings required. The Trustees will contact the volunteers when they need assistance with a repair/project. This would be for smaller, not major work. If we can complete some work ourselves, we can perhaps eliminate the expense of using outside contractors. If you are interested and would like to volunteer or have any questions, please contact Roger Hazelton at 845-221-0435.

Finance Committee Report –

Based on feedback, we are simplifying the report. If you would like to see the details please ask Chip Waldrup or Terry Walsh, either would be happy to provide them.

Jan 1, 2011 – Sep 30, 2011:

Total Revenue	\$141,747
<u>Total Expenses</u>	<u>\$150,765</u>
Net Income (Loss)	\$ (9,018)

- Free Will Offerings currently \$10,000+ less that this time last year
- Fuel oil has already over \$11,000 over budget as we head into heating season...

THANK YOU TO OUR CROP WALKERS!

Recently, on Sunday, October 16, Rev. Karen, Bill and Heather Listwan, Joy Link and her daughter Julie Mastrantoni, and Kathy Roth and three of our Confirmands (Christian Jones, Kyle Roth and Michael Mastrantoni) walked 5 miles in the annual C.R.O.P. walk, held on the rail trail to raise money for hunger relief, including local pantries. It is not too late to sponsor our walkers through a check made out to "CWS/CROP" and mailed to the church office at P.O. Box 900, Carmel, NY 10512. CWS stands for Church World Service. Thank you in advance for sponsoring our walkers. Other churches who took part included but were not limited to: Church of the Holy Communion (Mahopac), Lake Mahopac UMC, Gilead Presbyterian, First Presbyterian (Mahopac, with Rev. Ken Mast, CROP Walk coordinator).

Welcome to Our Newest Members!

Judy & Ken Launhardt: On August 5, 1995, Judy & Ken were married here at Drew by Rev. Driscoll. Although they are members at Mt. Kisco UMC, currently pastored by Rev. Matt Curry, they are delighted to join Drew as affiliate members because of their history of connection to this congregation.

Judy & Ken have attended and helped with dinners, the Christmas Bazaar and the Christmas Pageant. They attend Sunday services here as well as many Saturday services when they are visiting Judy's mother, Dagmar Swanson, for the weekend.

Judy works with senior citizens who have Alzheimer's Disease, in the dining room of a facility in Mt. Kisco. Ken works in Armonk at a group home, doing maintenance work. They both enjoy movies, going out to dinner, and trips together. Judy sings in the choir, which is featured twice a month during worship, at Mt. Kisco UMC. She and Ken also volunteer there by doing some cleaning in the church, and they would like to help with some cleaning tasks here as well. Judy plays the drums and might like to play them some time for a Saturday service.

Judy & Ken have been a part of our church family for so long that it is a pleasure to welcome them as affiliate members so that they can serve as part of the Body of Christ both here and in Mt. Kisco. Welcome, Judy & Ken!

Elain and Robbie Rigo: Robbie and Elain moved up to Kent in 1999 from White Plains. Robbie was born and raised in Pelham. He has been a professional singer/entertainer for upwards of 30 years. Robbie has opened for groups such as Meatloaf, John Sebastian (the Lovin' Spoonful), The Birds, & Ritchie Havens, and was a five-time winner on "Star Search." Robbie is giving a benefit concert for Drew on November 4th, including a performance from Phantom of the Opera.

Elain is from the Philippines and came to the States with her family in 1970. She is one of eight children and comes from a long line of pastors (her brother, cousins and uncles). In fact, her grandfather was the pastor of Wesleyan College in the Philippines. She currently works for the Town of Kent.

Thomas Sherry: Thomas was raised in the Bronx. He comes from a large family (one of nine children) and his background is Irish Catholic. Thomas has been coming to the church for a long time to attend Putnam Promises, and he became active in worship and service at Drew when Rev. Karen invited him to work on music with her and another friend for the Drew's Blues Kitchen held in April. Thomas has performed in two Blues Kitchen shows, helped with Trustee work days, and will be coordinating the kitchen for the "House of Rock" this month. Watch for him in a performance again soon! He has led singing at "Beacon of Hope on the Lake," our Saturday service, when Bishop Park was with us and again in October. He coordinated collection of pet food and money for Hurricane Irene victims and delivered them with Rev. Karen when they travelled to Ulster County to perform music and talk about Drew UMC on public access television. Thomas took part in some of our Disciple Bible sessions, our Town Hall meeting, and spoke at our Charge Conference. Thomas loves to cook, is a sports fan, and ran three marathons (two NY & a Boston). Look for him soon on Facebook!

HOW DO I BECOME A MEMBER OF DREW CHURCH?

We are really glad you asked. Membership is a way of communicating to the pastor and congregation of Drew Church that you have found a spiritual family where you feel at home and with whom you would like to grow and serve God by serving others. It is our hope and prayer that we can assist you in your growth and identifying your gifts and talents and how you can team up with others here to serve the community and the world.

Membership: There are two ways to join Drew Church. One is by having a transfer letter sent from another church to which you belonged. The other is by "profession of faith." In both cases, we ask you to stand before the congregation at a Saturday or Sunday service to respond affirmatively to faith questions and to affirm your desire to offer "prayers, presence, gifts and service" to God through Drew Church. The questions are found in the hymnal and the responses are "I do" and "I will." The pastor will go over these with you prior to joining. It is a beautiful moment before God and your new church family, and we seek to make it a special day for you!

Fellowship Friends: When you start to explore membership at Drew, we will introduce you to a fellowship friend. This person will help you get to know our church and its programs as well as finding ways we can get to know you and welcome you into our congregation. Your fellowship friend will stand up with you when you join and introduce you to the congregation.

Affiliate Membership: When persons are members of the United Methodist Church in another area but are now living here for an extended time, they may wish to loyally retain their original church membership while also expressing a commitment to Drew Church. They may choose to become "affiliate members" of this church and will also join at a worship service. The only difference between members and affiliate members is that affiliate members will not have voting privileges on the Administrative Council, the governing body of the church, nor at the Annual Charge Conference. Otherwise they are full members. Thus they are still counted as members of their original church yet it is a nice step to say that while they are in our area Drew is their church home.

Associate Membership: When persons are not willing to leave the Christian denomination in which they were raised but wish to join Drew Church, the option exists of becoming "associate members." As with affiliate members, associate members do not have voting privileges on the Administrative Council, the governing body of the church, nor at the Annual Charge Conference. Otherwise they are full members. ~ Please note: We also have members who have joined Drew Church as full members through "profession of faith," leaving their original denomination. It is their individual choice as to the relationship they wish to have with their former denomination.

What if I don't wish to join? We also have faithful friends who attend Drew regularly, participating in various church programs, who have not yet chosen membership. They are always most welcome and considered an integral part of our church family. However, it is good for our congregation to welcome you in church services and know of your commitment to working together with your church friends for the glory of God. Joining is a visible expression of that commitment. We do, therefore, encourage you to explore membership.

To speak with Reverend Karen Burger, Pastor, about membership at Drew, please call (845) 225-2019, or e-mail drewumc@verizon.net.

United Methodist Men

The mission of the General Commission on United Methodist Men, and the local Church Men's Group, is to assist men to know Jesus Christ, to serve Him, to grow spiritually and seek daily to do his will.

The Drew United Methodist Church Men's Group meets every third Sunday of the month at 7:15 am in the gym for devotions, breakfast, study, fellowship, and programs. This month, join us on November 20th.

The first Wednesday of every month at 6:30 am, all men are invited to gather for breakfast, fellowship, and a short devotion at George's Place Restaurant (up the street from the church on Gleneida Avenue). This is a diverse and ecumenical group of men from many churches around the Hudson Valley. This monthly event was started many years ago by Les White, and it continues to draw people in from many of our surrounding communities and churches.



YOUTH GROUP NEWS!

Youth Group will meet on Sunday November 6th



We will also be gathering on Saturday November 19th to put together Thanksgiving Food Baskets and then to share in a potluck supper and to attend the Saturday Service. Dr. Melvin Hall will be our speaker for that evening, and he wants to meet with our youth and give them an inspiring message.

The Youth Group will be participating in the Christmas Bazaar as well, on Dec. 3rd.

Youth Group meetings will be held at 5pm, following Confirmation Class. There will be no Youth Group following class on November 20th, because the group will be participating the night before.



MISSIONS COMMITTEE



- CROP WALK CAME OFF SUCCESSFULLY WITH THE COOPERATION OF THE WEATHER AND DONATED FUNDS FOR THIS WORTHY CAUSE.

Please include the following on your personal calendars during November & December 2011 & January 2012:

- Food items gifts to Putnam CAP in Brewster will be received during our Sunday Worship services on:
November 25th - December 23rd - January 29th
- Thanksgiving Food Baskets - November date to be posted in Church side entry. Last year, Putnam CAP distributed over 425 food baskets to struggling families in our area. Donations are urgently needed for this upcoming Thanksgiving Project.
- A Christmas Giving Tree will come to the Sanctuary in December - a church family gift.

January 2012 Missions is adding another three traits found in successful, happy people:

* they align themselves with like-minded people.

* they take action before they have 2

* they never rationalize failure; they avoid repeating

2010-2011 Chairman of Missions, H. A. K. Jones

Website News

Please submit your photos of events and activities at Drew to Wes MacKenzie at wmackenzie@gmail.com! Check the website regularly for recent newsletters, bulletin announcements, and more.



"GREENING" THE CHURCH THROUGH RECYCLING

We would like to recycle as many waste products as we can to protect the environment. Please remember the following:

1. All plastics should be placed in the recycling bins in the kitchen or the bin outside the kitchen door.
2. Corrugated cardboard (cardboard with lines in it) is recyclable and should also be placed in one of the above mentioned bins.
3. All office paper printed or not is recyclable and there are boxes in the narthex and the church office where you can deposit paper.

Thank you for your help.

-Jim MacDonald

CELEBRATION SUNDAY!!!

This past month we lifted our celebrants on their significant day in prayer and joyously celebrated the following birthdays and anniversaries during fellowship: Birthdays: Brian O'Connor, Thomas Reilly, Frank Vasi, Jr., Judy MacDonald, Thelma Arbogast, Kerry O'Connor, Lyn Lundberg, Ron Burger, Robin Keith, Carrie Schell, Gayle Zawrotny, Cindy Gerber, Drew Schnaudigel, Flo Dean, Dee Seftner, Ellie Arnholm & Roger Hazelton.

Anniversaries: Wes & Karen MacKenzie, Rob & Pam Jackson

Please remember to lift the following November Celebrants on their extraordinary day in prayer: Birthdays- 3rd- Kristen Safford; 5th- Joy Link; 10th- Angela Bowman, Andrew Goodrow &

Robin Kaplan; 11th- Christopher Schell; 21st- Brianna DeProssino; 23rd- Ryan Maglio; 25th- Ed Lundberg; 30th - Terry Walsh. Anniversaries: 10th- Ron & Dale Donato; 16th- Ed & Lyn Lundberg
Be sure to join us on Celebration Sunday, November 28th when these persons will be recognized and we celebrate life!!!

*Contact Mariah in the office if your name was omitted and you wish to be included.

“DON’T FORGET THE WORDS TO OUR CELEBRATION SUNDAY SONG”

HAPPY BIRTHDAY TO YOU, ANNIVERSARY, TOO-

WE CELEBRATE WITH YOU AND MAY GOD BLESS YOU, TOO!

Heartfelt Thanks to . . .

- Our coffee hour hosts and hostesses for October: Toni Pease, Betsy Jones, Robin Kaplan, Kerry Browne & Ron Burger, and Gayle Aprile.
- Fellowship Friends Dorothy Sinatra, Kerry Browne & Ellie Arnholm
- Robbie & Elain Abraham-Rigo, Missions & Education Committees, & Rev. Karen, for work on the benefit concert for Nov. 4th
- Kerry Browne & the House of Rock team for work on the upcoming House of Rock concert on Saturday, November 12th
- Our “Blessing of the Animals” team for a great outreach event (Bill & Heather Listwan, Ellie Arnholm, Terry & Sean Walsh, Rev. Karen)
- Spirit Walkers for great ecumenical ministry on the trails.

Congratulations to . . .

- Nancy McAlley on officiating her first wedding on November 4th. (Nancy is studying to be an interfaith celebrant).

Condolences to . . .

- The Schubert family upon the passing of Yvette’s father-in-law, also Rev. Karen’s sister’s father-in-law.

Tribute Gifts

Donor

Louis & Susan Margolus

In Memory Of

Frieda Margolus

Tribute gifts may be given at any time in honor of someone, or of an occasion such as an anniversary or birthday, etc.

Forms are available in the church office and in each edition of The Bell.

“Love never ends...” (1 Corinthians 13:8)

Looking Ahead... Mark Your Calendars!

Friday, November 4 th	Concert by Robbie Rigo at Drew, 8:00 p.m., with special guests from Drew.
Saturday, November 5 th	Eagle Scout Court of Honor, Robert Barrett Thrift Shop Volunteer Luncheon, 12:30 p.m.
Saturday, November 12 th	House of Rock. Doors open at 7:00 p.m.; show is from 8:00 – 11:00 p.m. Tickets on sale in advance for \$8.
Sunday, November 27 th	Decorating of the church and Thrift Shop
Saturday, December 3 rd	Drew's Annual Holiday Bazaar Drew UMC Open Church and Carol Sing Soup served for the community; "What if Church was a warm cup of soup?"

DEADLINE

Articles for the December issue of The Bell are due:

Wednesday, November 16th

Acolyte Corp

CRUCIFER - ACOLYTE - PAGE SCHEDULE

<u>Sunday,</u> <u>November 6th</u>	<u>Sunday,</u> <u>November 13th</u>	<u>Sunday,</u> <u>November 20th</u>	<u>Sunday,</u> <u>November 27th</u>
C - Christian Ross Jones	C - Sean Walsh	C - Ryan Walsh	C - James Reilly
A - Christa Pease	A - Drew Schnaudigel	A - Amanda Gregis	A - Lily Escamilla
P -	P - Jillian Schnaudigel	P - Johnathan Schell	P - Sam Duke (?)

***REMINDER:** If you are unable to make your scheduled date, please find a replacement from the list of crucifers, acolytes, and pages, and notify Sean Walsh (878-4549) by **Wednesday** of that week, who will be taking your place.

Lay Reader Schedule

<u>Sunday,</u> <u>November 6th</u>	<u>Sunday,</u> <u>November 13th</u>	<u>Sunday,</u> <u>November 20th</u>	<u>Sunday,</u> <u>November 27th</u>
Kathleen Reynolds	Ron Burger	Stu Summers	Debbie Murnan

***REMINDER:** If you are unable to make your scheduled date, it is your responsibility to find a replacement from the list of Lay Readers, and notify Mariah (225-2019) of your replacement by **Wednesday** of that week, for the bulletin.

Resources for You

The church, in its role of community support, has information on local/state/federal government resources for those in need. Specific information is available in the office on the following programs:

- 1) FEMA's Disaster Assistance- for those affected by flooding from Hurricane Irene and Tropical Storm Lee
- 2) Putnam County Housing Corporation/pre-application screening for the Emergency Homeowner's Loan Program (EHLP)
- 3) Social Security- applying for Medicare and prescription assistance.
- 4) If you would like to take a look at any of the above information, please see Mariah in the church office during office hours (T-F, 9:30 - 2:30).

Poinsettia Order Form



You are invited to place red poinsettias in the sanctuary for the Christmas Eve services. Each plant costs \$9.95. Please fill out the form below, attach your check, and place it in the offering plate or return it to the church office **no later than Monday, December 12th**!
PLEASE use a SEPARATE form for each plant ordered

Please print clearly

Name: _____

Address: _____

Telephone or Email: _____

Amount Enclosed: (\$9.95 per plant) _____ (Make check payable to Drew UMC)

In Honor/Memory of: (please circle one) _____

Please check one: Deliver plant to hospital (following services)

Will pick up plant after the 11 p.m. Christmas Eve Service



CHRISTMAS GREETINGS

Christmas will soon be here- the time we send JOYOUS CHRISTMAS WISHES to those we care about. Again this year, the December Bell will print a card greeting your church friends for you. By signing this card, you will let your friends know that you have given a Christmas card donation in their honor instead

of sending the card they would otherwise receive from you in the mail. Please fill out the following form and return it- together with your donation- to the church office or put it in the offering plate, by **Monday, November 28th**. Then look for the Bell in December! You may be pleased to find greetings from your friends, too!

Yes, I want to be included on the Christmas card to all my friends at church!

Name of donor: _____ Phone number: _____

Donation enclosed: (payable to Drew UMC) \$_____.

Thank you!



Remember in Your Prayers

Our Bishop, the Rev. Jeremiah Park
The Rev. Betsy Ott, our District Superintendent
Men and women of our Armed Forces and their families
For Hurricane Irene relief efforts
For expectant and new mothers
For those seeking to become pregnant
For peace in the world
Persons seeking healing in their marriages and families
For those seeking jobs
For those in transitions and decision making
Persons battling addictions
Persons in recovery
For all who suffer depression and mental illness
Our college students
For all of our church's ministries
Ellen Abraham (Elain's mother, kidney issues)
Anthony and Elvira Aguiar (Pam Jackson's grandparents)
The Amicucci family
Gene Angelo
Ann Apgar (Elizabeth Triano's mother, for good health)
Maggie Applegate (for healing from cancer)
Thelma Arbogast (for good health)
Susan Arnold (for healing)
Marguerite Aumann (friend of Bill & Heather Listwan, for God's comfort and peace)
The Barry family- prayers for Jake
Heather Bianco (for healing from Lyme disease)
Isabel Bond (friend of Barbara White)
Jane Bowman
Larry Bowman (for good health)
Robert Bowman
Maude Boyce (at Salem Hills)
Ian Brent (for good health)
Ellen Browne (friend of Robin Lounsbury, with stage IV lung cancer)
Kerry Browne (thanksgiving for work)
Del Burger (Ron's father, at Gardner Heights Rehabilitation Center)
The Carlson family (upon the passing of Jean O'Hara)
John, Kevin & Sean Chappell (upon their loss of wife and mother Loretta from cancer)
David Colucci
Jennifer Crowell (Barbara White's great-niece, permanently paralyzed from the chest down)
Michelle Dalton (healing of back injury)
Nancy Daleney and family (for God's peace and comfort following Willy's passing)
Flo Dean (for good heart health)
Joe DeMaio (for good health)

Joanne DeRescigno
Dale Donato and family
Erin Duke
Lucille Duke (for good health)
Elaina (recovering from spinal surgery)
Jack & Lois Engleman (Rev. Karen's parents; praises for good health)
Cindy Fletcher
Mary Frenchman (for healing from breast cancer)
Carol Fusco (for healing)
Pat Fusco (emphysema)
Andrew Gallino (for good health)
Helen Gilbert (friend of Dean Saddler's daughter, healing from bone marrow cancer)
Gerry Gmoser (for healing)
Bobby Gokey (healing from amyloidosis)
Barbara Gregis
Dorothy Guidice (Jennifer Bowman's aunt)
Edward Guidice (Jennifer Bowman's uncle)
Brother Melvin Hall (for God's continued anointing and blessings and good health)
Thomas Hansen (Cheryl Wild's brother, chemotherapy for lung cancer)
Janet Haswell (multiple sclerosis)
Jackie Hebrank (for healing and strength)
Robert Jackson (cataract surgery, Rob's Dad)
The family of Margaret ("Peggy") Johnson
Janice Jorgenson (Joanne Ocskasy's mother)
Ernie Kidd (for good health)
Edward Lavelle (for healing)
Margaret Lavelle (for healing, Amelia's sister-in-law)
Pat Ledley (for healing from cancer)
Mildred Lee
Liam
Diane Listwan (Bill Listwan's mother, for healing and strength)
Jessica Listwan and Ava Listwan
Kim Listwan
Bob Loso, Jr. (for healing of his heart)
Sue Loveland (for healing)
John Lynch (Bill Listwan's brother-in-law)
Alison Macaiak
Jonathan Mackenzie (for good health)
Wes MacKenzie (for continued healing of his back)
Sgt. William MacKenzie (for God's daily healing and blessings, healing of a blood clot)
Judy Malin (Kym Malin's mother)
Kym and Kyle Malin and family
Marcelino Marquez, Jr. (Marine in Afghanistan)
Dawn Mitchell (Heather Listwan's sister-in-law, for healing)

Debbie Murnan (for good health)
Chris Murphy (for healing of lymphoma)
Betty Naber (for good health)
Mary Nichols
Ray Ohrablo (for God's strength and help)
Family of Tom Opdyke
John Parish (for continued healing of lung)
Henry Penndorf
Mike Pisito (Joe DeMaio's uncle, heart condition, for God's peace)
Alison, Rebecca & Theresa Porteus, and George Porteus, Jr. (Jackie Hebrank's relatives)
Cullen Powers (for God's strength)
Edythe Puckhaber (for good health)
Daniel Reekie
Eddie Reilly (for good health)
Robbie Rigo (for good health, healing)
Zoe Riggs (for healing)
Sarah Russell (for strength, healing and help)
Valerie Rutledge (for healing from breast cancer)
Katie Rhodes Scott (for healing)
Kathy Ruhs (breast cancer)
Abraham Sam (Rena Christophers' father)
Lisa Schiavi (recovering from a stroke)
The Schubert family
Charles Shaffer (for strength and heart health)
Olive Sinclair (for God's comfort)
Cindy Snow (treatment of breast cancer)
Richard Spicer (Donna Lou's father)
Crystal Stacks
Mae Stromsland
Justin Studler
Margaret Swift, mother of David Swift
Carol Thompson (for healing from cancer)
Barbara Toolan
Ginny Wachter
Max Wheeler (for God's daily blessings)
Barbara White (for good health, thanksgiving for successful surgery)
Cheryl Wild and family (in their new home)
Gretchen Witt (for healing and peace)
Carole Wyland (childhood friend of Susan Arnold, major heart problems)
David Wylie
Thomas Young (Cindy Gerber's father, for healing and strength)
Eric Zicella (for healing following surgery; praises for good report)

NOTE: When names and situations on our prayer chain need to be updated or names added, please advise Barbara White (279-2160) or Rev. Karen (225-2019, 225-7992).

Drew United Methodist Church * Carmel, New York 10512
November 2011

<i>Sunday</i>	<i>Monday</i>	<i>Tuesday</i>	<i>Wednesday</i>	<i>Thursday</i>	<i>Friday</i>	<i>Saturday</i>
		1	2	3	4 Benefit concert with Robbie Rigo, 8:00 p.m., featuring Rev. Karen, Thomas Sherry & Chris Curry	5 Thrift Shop Volunteer Luncheon, 12:30 p.m. "Beacon of Hope on the Lake" Saturday Service, 7:00 p.m.
6 Twenty-first Sunday after Pentecost; All Saints Sunday; Communion Healing Prayer available following worship in the Sanctuary Disciple Bible Study, 11:00 a.m. Community Festival Choir rehearsal, 2:00 p.m. Confirmation Class, 4:00 p.m., Gould Lounge Youth Group, 5:00 p.m., Gym Daylight Saving Time ends	7 Mariah out of office	8 7:30 a.m., Community Prayer Gathering, Cornerstone Park Finance Committee, 7:30 p.m., Gould Lounge	9 Chancel Choir, 7:30 p.m.	10	11	12 "Beacon of Hope on the Lake" Saturday Service, 7:00 p.m. House of Rock. Doors open at 7:00 p.m.; show at 8:00 p.m.
13 Twenty-second Sunday after Pentecost Disciple Bible Study, 11:00 a.m. Community Festival Choir rehearsal, 2:00 p.m.	14 Mariah out of office Trustees, 7:00 p.m., Gould Lounge	15 SPR, 7:00 p.m., Gould Lounge	16 November "Bell" articles due Chancel Choir, 7:30 p.m.	17 Thrift Shop Board meeting, 7:00 p.m., Gould Lounge	18	19 Thanksgiving Basket assembly Potluck supper, 5:00 p.m. "Beacon of Hope on the Lake" Saturday Service, 7:00 p.m. Bishop Melvin Hall, preaching
20 Christ the King/Thanksgiving Sunday UMM Breakfast/Program, 7:15 a.m. Disciple Bible Study, 11:00 a.m. Community Festival Choir rehearsal, 2:00 p.m. Confirmation Class, 4:00 p.m., Gould Lounge	21 Mariah out of office Membership, 7:30 p.m., Gould Lounge	22 Interfaith Thanksgiving Service at Trinity Lutheran Church, 7:00 p.m.	23 Chancel Choir, 7:30 p.m.	24 Thanksgiving Office closed	25 Office closed	26 "Beacon of Hope on the Lake" Saturday Service, 7:00 p.m.
27 First Sunday of Advent; Celebration Sunday; Baptism of Jianna Isabel Mero Disciple Bible Study, 11:00 a.m. Community Festival Choir rehearsal, 2:00 p.m.	28 Mariah out of office Christmas Greetings forms due!	29	30 Chancel Choir, 7:30 p.m.			



A Celebration of Life: Tribute Gifts

Tribute gifts are an excellent way to acknowledge special occasions in the lives of loved ones and friends. Instead of presents, Tribute Gifts can be given to celebrate birthdays, holidays, graduations, anniversaries or any other significant life event, such as Mother's Day, Father's Day, and Confirmation.

Tribute gifts are a very special way to honor the memory of a deceased friend, relative or colleague while conveying your sympathy to the family on the loss of their loved one.

Contributing to Drew United Methodist Church in someone's name is a **living gift** that continues to give through the ongoing ministries of Drew Church.

Simply fill out the Tribute Gift form and send your donation (in any amount) payable to Drew United Methodist Church to:
Drew UMC
PO Box 900
Carmel, NY 10512

An acknowledgement of your Tribute Gift will be sent to the person or family you have designated. You will receive a personal acknowledgement for your tax-deductible gift and your name will be listed in The Bell, our church newsletter.
Thank you!



Drew United Methodist Church Tribute Gift Program

Date: _____

Enclosed is my donation of: \$ _____

Name: _____

Address: _____

City/State/Zip: _____

Telephone/E-mail: _____

In Honor of: _____

In Memory of: _____

- Birthday Anniversary New Baby Baptism
- Confirmation Graduation Easter Christmas
- Thanksgiving Mother's Day Father's Day Speedy
- Other: _____ Recovery

Please send an acknowledgement to:

Name: _____

Address: _____

City/State/Zip: _____

The following personal note from you will be enclosed (optional):

